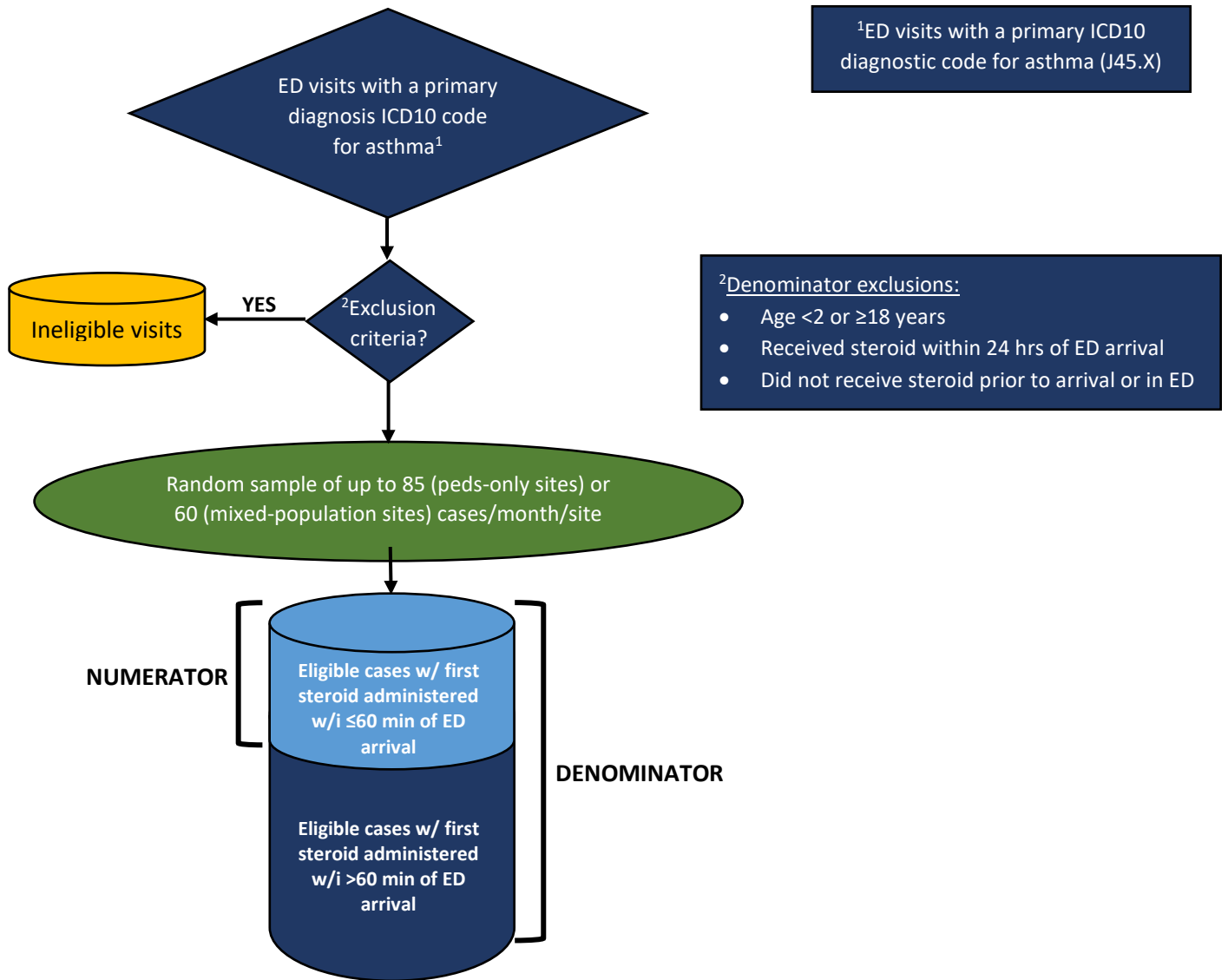


MEDIC
 Sampled Pediatric Asthma Time to Steroid Administration Measure Specification Flow Diagram
 Ages 2 to <18 years old



$$\% \text{ eligible cases with first steroid administered in ED within } \leq 60 \text{ min of ED arrival} = \frac{\# \text{ eligible cases that had the first steroid administered in the ED within } \leq 60 \text{ min of ED arrival}}{\# \text{ eligible cases that had a steroid administered at any time during their ED stay}}$$

Pediatric Asthma Time to Steroid Administration Measure:

Quality initiative measure reported as: % eligible cases that had the first steroid administered in the ED within ≤60 min of ED arrival

Numerator = # eligible cases that had the first steroid administered in the ED within ≤60 min of ED arrival

Denominator = # eligible cases that had a steroid administered at any time during their ED stay

FOOTNOTES: Cases with visit dates prior to Nov 1, 2021 at all sites – regardless of pediatrics only or mixed population – sampled 50 cases with any diagnosis of asthma in the past or current medical history. Beginning w/ Nov 1, 2021 visit dates, pediatric-only sites will sample 85 cases with primary diagnosis of asthma. Beginning w/ Nov 1, 2021 visit dates, mixed-population sites will sample up to 60 cases with a primary diagnosis of asthma. However, if only 40 cases with a PRIMARY diagnosis of asthma are available to be sampled, the remaining up to 20 cases can have asthma in any diagnostic position.

Updated: 10.27.2021